

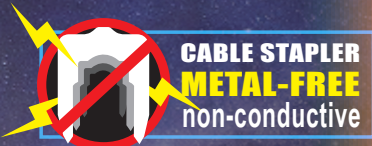
REDUCE OPERATING FORCE OVER 25%

T4300

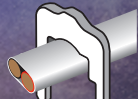
H.D. MULTI-FUNCTIONAL PLASTIC CABLETACKER

NEW SAFETY HANDLE LOCK 

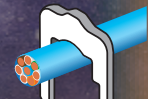
REDUCED KICKBACK VIBRATION 



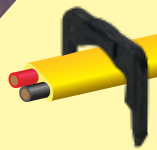
CABLE STAPLER
METAL-FREE
non-conductive



FLAT CABLE



ROUND CABLE



6308P

 $\varnothing 4.5\text{mm}$ (0.177")



8x3.5mm
(0.315" x 0.138")

6310P

 $\varnothing 6\text{mm}$ (0.236")



10x4.5mm
(0.394" x 0.177")

6312P

 $\varnothing 8\text{mm}$ (0.315")



12.4x5.3mm
(0.488" x 0.209")

 THERMOSTAT WIRE
 $\varnothing 3.91 - \varnothing 6.22$

 SECURITY/
FIRE ALARM
 $\varnothing 3.66 - \varnothing 5.89$

 LAMP CORD
4.8x2.5 - 10.5x4.6

 TELEVISION
 $\varnothing 5 - \varnothing 7.8$

 DATA, TELEPHONE
& INTERCOM
 $\varnothing 3.5 - \varnothing 8.1$

 HOUSE LIGHTING
9.65x4.52

 LANDSCAPE
LIGHTING WIRE
7.8x3.96 - 10.28x5.2

 CEILING FAN
 $\varnothing 7.9 - \varnothing 8.6$

 WALL SWITCH
& RECEPTACLE
10.9x4.3 - 12.14x4.47

- DATA wire: CAT 5 ($\varnothing 5.3$)
- Speaker wire: 16/2 ($\varnothing 5.03$), 16/4 ($\varnothing 5.84$)
- Speaker wire: 30C (3.2x6.4mm), 50C (3.46.8mm), 100C (3.8x7.6mm)
- Thermostat Wire: 18/4 ($\varnothing 3.91$), 18/5 ($\varnothing 4.32$), 18/6 ($\varnothing 4.72$), 18/7 ($\varnothing 4.72$)
- Fire Alarm FPLP Wire: 16/2 ($\varnothing 4.47$), 18/2 ($\varnothing 3.66$), 18/4 ($\varnothing 4.27$), 18/6 ($\varnothing 4.67$)

- Lamp Cord SPT-1 (0.76): 20/2 (4.8x2.5), 18/2 (5.5x2.8), 18/3 (7x2.8)
- Landscape Lighting Wire: 16/2 (7.8x3.96)
- Telephone Wire: OD 0.95mm: 2C ($\varnothing 3.5$), 4C ($\varnothing 4$)
- Telephone Wire: OD 1.2mm: 2C ($\varnothing 4$), 4C ($\varnothing 4.5$)

- DATA wire: CAT5E ($\varnothing 6.1$) (6x1.35), CAT6 (E) ($\varnothing 6.3$)
- Building Wire: 14/2 (9.65x4.52)
- Coaxial cable: 3C-2V ($\varnothing 5$), 21VATC ($\varnothing 5.5$), 23VATC ($\varnothing 5.1$), RG59 ($\varnothing 6.1$)
- Thermostat Wire: 18/8 ($\varnothing 5.13$), 18/10 ($\varnothing 6.05$), 18/12 ($\varnothing 6.22$)
- Fire Alarm FPLP Wire: 12/2 ($\varnothing 5.89$), 14/2 ($\varnothing 4.83$), 14/4 ($\varnothing 5.69$), 16/4 ($\varnothing 5.13$)
- Lamp Cord SPT-2 (1.14): 18/2 (6.7x3.6), 18/3 (9.1x3.6), 16/2 (7.2x3.9), 16/3 (9.7x3.9)

- Lamp Cord SPT-3 (1.52): 18/2 (8.4x4.3), 18/3 (9.5x4.3), 16/2 (8.8x4.6), 16/3 (10.5x4.6)
- Landscape Lighting Wire: 12/2 (9.4x4.72), 14/2 (8.7x4.2)
- Telephone Wire: OD 0.95mm: 6C ($\varnothing 4.6$), 7C ($\varnothing 4.7$), 8C ($\varnothing 4.8$), 10C ($\varnothing 5.4$), 4P ($\varnothing 5.4$), 5P ($\varnothing 6$)
- Telephone Wire: OD 1.2mm: 6C ($\varnothing 4.8$), 7C ($\varnothing 5$), 8C ($\varnothing 5.5$), 10C ($\varnothing 6$)
- Audio / Video Foil shielded wire ($\varnothing 5.2 - \varnothing 6$)

- DATA wire: CAT6A-4P ($\varnothing 7.3 - 7.5$), CAT 7 ($\varnothing 8.1$)
- Building Wire: 10/2 (12.4 - 12.8x5.5), 12/2 (10.9x4.3), 12/3 ($\varnothing 8.6$), 14/3 (12.14x4.47) ($\varnothing 7.9$)
- Coaxial cable: 5C-2V ($\varnothing 6.65$), 17VATC ($\varnothing 6.8 - 7.06$), RG6 ($\varnothing 6.9 - 7.54$), CT100 ($\varnothing 6.65$), CT125 ($\varnothing 7.8$)
- Landscape Lighting Wire: 10/2 (10.28x5.2)
- Telephone Wire: OD 0.95mm: 14C ($\varnothing 6.2$), 10P ($\varnothing 8$)
- Telephone Wire: OD 1.2mm: 14C ($\varnothing 8$)