



EVERY **DETAIL** COUNTS.

Movex's products are the result of extensive design, strict quality control and significant know-how developed over the years.

EXPERIENCE THE DIFFERENCE.

Movex[®]

Movex[®]
Together, we move your world.

Who WE ARE



Movex

Made in ITALY

PERFORMING everywhere.

We design and manufacture high-quality components for the beverage, packaging, food, logistics, automotive and automation industries.

We meet our customers' needs for both standard and customized products in a dynamic and proactive environment.

Our loyal customers include OEMs, conveyor manufacturers, system integrators, distributors and demanding end-users looking for reliability, excellent customer service and outstanding quality.

>200 EMPLOYEES
WORLDWIDE

>30% ANNUAL
GROWTH

>2.000 SATISFIED
CUSTOMERS



MISSION

To forge our values through the development of ideas and high standards, and to professionally support our partners with flexibility and efficiency.



VISION

To achieving strong market leadership, while constantly remaining up to date. To plan our future while remaining faithful to our history and values.



VALUES

ONE FOR ALL, ALL FOR ONE: working proactively in every aspect of our business in order to achieve our goals together.

INNOVATION: embracing change and innovation in order to support our customers, cooperate with our partners and be the best version of ourselves.

TRANSPARENCY: creating honest and constructive relations.

QUALITY: delivering the best results and being proud of what we do.

One **PASSION**



Movex[®]

Our HISTORY

the backbone of our FUTURE

Our story began in 2011, when the Marsetti family's passion and knowledge came together to create a new company; Movex S.p.A.

The family's experience in manufacturing components for the beverage and food industries has been developed to create a company capable of creating and offering the best possible products, thanks to an organized structure and a rapid response to demands.

Today, Movex is an industry benchmark, thanks to the cooperation between management and employees.

In 2021, the partnership with [Armira](#), a German investment holding company, allowed Movex to expand its vision and bolster its stability.

FOUNDATION **2011**
MAY

The company sees rapid growth. It is time to find a new HQ. Movex moves to a new building in Castelli Calepio.

NEW LOGISTICS **2020**
CENTRE **JUNE**

Same values, new partnership. Movex forges a partnership with Armira.

We develop our first range of products. The company is based in Telgate (Italy), the owners' hometown.

2019 **NEW**
HEADQUARTERS
JULY

To respond to high demand and maintain high standards, Movex creates a new space for storage and shipment.

2021 **NEW**
PARTNERSHIP
DECEMBER

Our PRODUCTS



Movex

The best **QUALITY** in a wide **RANGE** **OF PRODUCTS.**

Movex's products are the result of extensive design, strict quality control and the significant know-how developed over the years.

Our goal is to improve communication with our customers in order to meet their needs and predict their expectations in terms of product evolution; **innovation is in our blood.**

The products are tested by our quality control team; monitoring, performance analysis and control of all processes are our main priorities.

We are strongly committed to providing our customers with the highest quality.

>120 MATERIALS USED

>700 PRODUCT FAMILIES

>35.000 PRODUCTS AVAILABLE

Stainless steel chains



Plastic chains



Drive and idler sprockets



Modular belts



Conveyor components



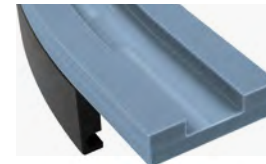
Leveling feet



Conveyor support components



Magnetic TAB & bevel corner tracks



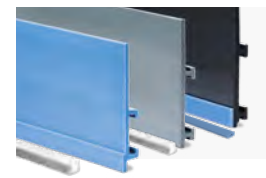
Conveyor return components



Bearing supports



Extruded profiles



Modular solutions



Our SERVICES



Movex

Tailor-made **SUPPORT** designed to **HELP YOU.**

Movex follows every single customer from the project (design & product selection) to installation, guaranteeing full support.

With more than 30 technical sales representatives worldwide, we offer global support directly on-site, via video conference or by phone.

Our services are tailored to our customers' needs.

Thanks to worldwide warehousing, we are able to provide short lead times and, in the event of the need for faster delivery times, our Priority Service, offering delivery in 1/2 working days, is always available.

>450 PRIORITIES
PER YEAR

<24h REQUEST
PROCESSING

99,7% PUNCTUAL
DELIVERY



SYNERGIA

A corporate service for line monitoring to verify the condition of your line and carried out by a dedicated team of experts!



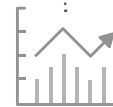
TECHNICAL SUPPORT

With the support of our specialists, the line efficiency can be increased and TCO can be reduced.



CONSULTING SERVICE

Skilled customer service on hand to answer questions and help you retrofit with our products.



DATA COLLECTION

By collecting data, we can identify line conditions and new solutions to render it 100% efficient.

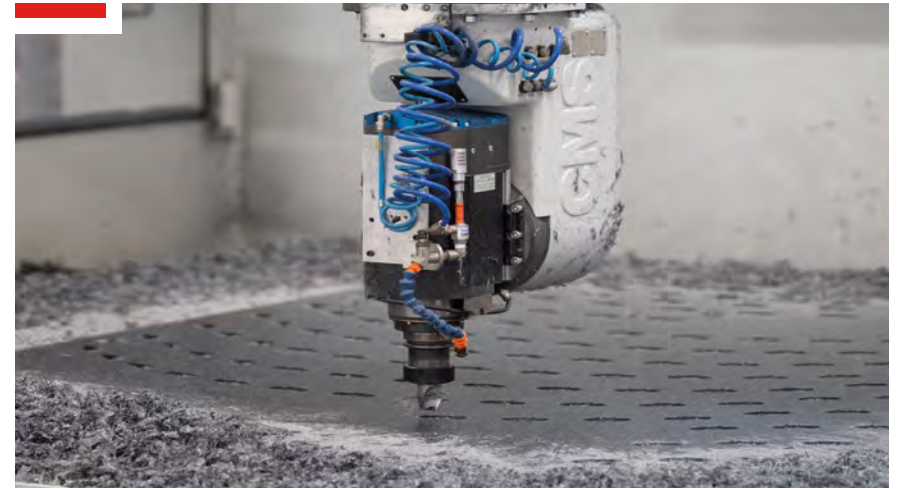


RAPID ASSISTANCE

Priority access to Movex services and rapid delivery of replacement parts to minimize downtimes.

WE MACHINE
for your business.

MACHINING DEPARTMENT



The machining department is where we produce straight sections and corner tracks (Magnetic, TAB & bevel versions) available in a range of unique and patented materials in various shapes and an extensive selection of polyamide sprockets, idler wheels and turning disks, either machined or molded and suitable for covering all applications.

Movex uses only top-materials and the best CNC technology for all types of processes required; this allows us to offer unrivalled accuracy and products that meet the needs of the most demanding clients.

Movex

>7.500 CURVES
AVAILABLE

>10 CNC
WORKSTATIONS

>1.900 SPROCKETS
AVAILABLE

MOLDING DEPARTMENT



The molding department is the heart of our production plant. Here, we produce most of the components in our catalogue: modular belts, components, plastic chains, and much more.

With more than 25 machines with a tonnage of between 90 and 500 tons, we are able to mold every product under the required conditions, always achieving perfect injection quality.

Furthermore, the majority of our machines are equipped with automatic or semi-automatic robotics.



WE MOLD

for your business.

>2.500 DIFFERENT COMPONENTS

8 SELF-ASSEMBLING UNITS FOR CHAINS

>25 MOLDING MACHINES

WE EXTRUDE
for your business.

EXTRUSION DEPARTMENT



With the extrusion department, Movex provides a new generation of high-performance profiles developed and produced with the most up to date technology.

Experienced engineers work around the clock on more than 50 extrusion machines, perfecting almost 2.000 high-quality products of different types and sizes.

Movex profiles are produced from top-quality UHMW-PE, with the possibility of enhanced performance with the use of our super-performing materials BluLub® and Titanium White®.

>2.000 PROFILES AVAILABLE **>50** EXTRUSION MACHINES **>300** EXTRUSION TOOLS

Movex

STAINLESS STEEL DEPARTMENT



The stainless steel department is where we produce our wide range of straight and side-flexing steel chains.

Our processing line starts with the pressing of stainless-steel reels through a full automatic process, including shining, creating a pre-packed chain coil.

Movex provides various types of stainless-steel chains; straight, side-flexing, magnetic, TAB or bevel, also available with vulcanized rubber. This extensive range is the ideal solution for the conveying industry.



WE FORGE
for your business.

>25.000 COILS ON STOCK

>20 TYPES OF CHAINS PRODUCED

4 TYPES OF STEEL MANUFACTURED

WE STOCK
for your business.



LOGISTICS CENTER and ASSEMBLING DEPARTMENT



We have two more warehouses for assembly just a few hundred meters from our production site.

With more than 7.000 square meters of space, almost 6.000 pallet places available, two automated storage towers and a dedicated area for truck loading, this is where we stock all of our finished goods, guaranteeing immediate availability for all our clients.

Every day, our specialized staff assembles, checks, packs and ships more than 5 km of plastic chains and modular belts and almost 80.000 different conveyor components worldwide.

Movex

**>7.000 M² WAREHOUSE
CAPACITY**

**>80.000 PRODUCTS
DELIVERED (PER DAY)**

A **WORLD** of solutions at your fingertips.

WORLDWIDE SUPPORT PARTNERS



- Sales office/stock location
- Distributor

To find the location closest to you, visit our website or ask to your sales representative.

Movex[®]

Our CUSTOMERS, our most valuable asset.

SELECTED REFERENCES



Movex

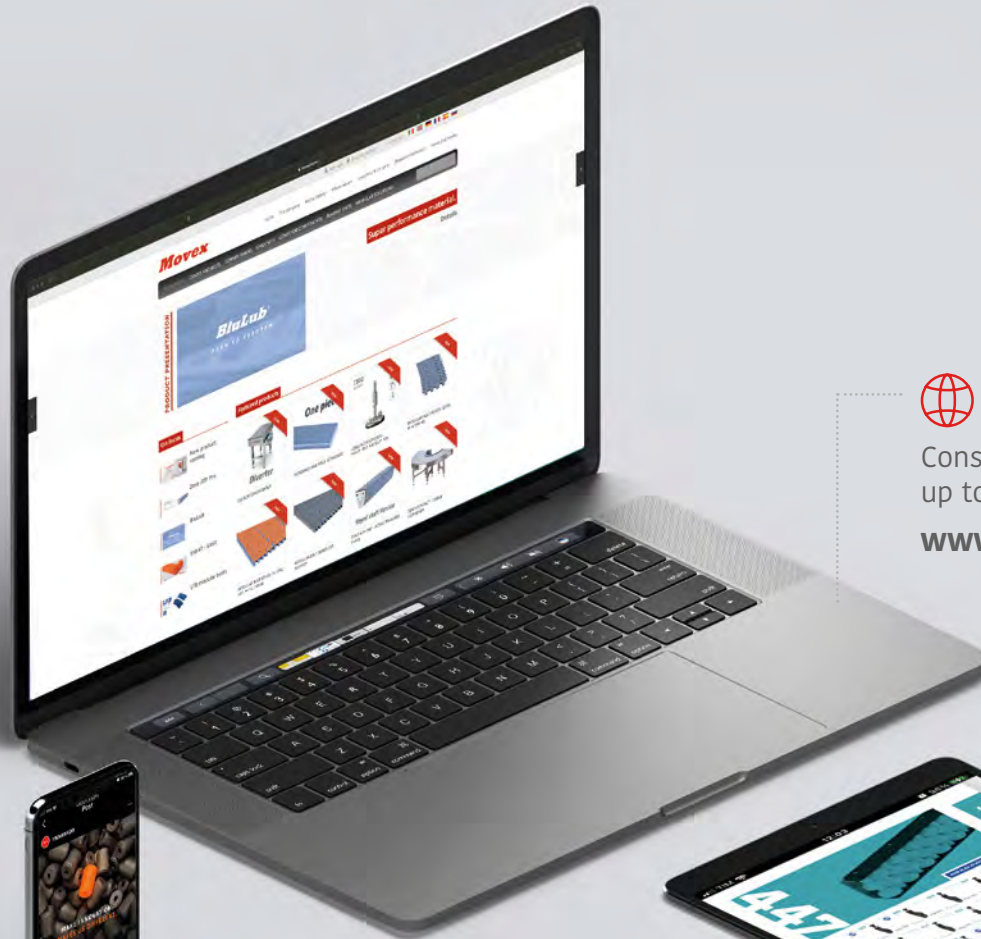
>2.000 SATISFIED CUSTOMERS

>20 MLN PRODUCTS SHIPPED (PER YEAR)

99% CUSTOMER SATISFACTION

Movex World

Three simple
ways to keep
in touch.



Website

Consult our catalogues and stay up to date with our latest news

www.movexii.com

Product Catalog

Download the interactive PDF* featuring all our products, from our website.

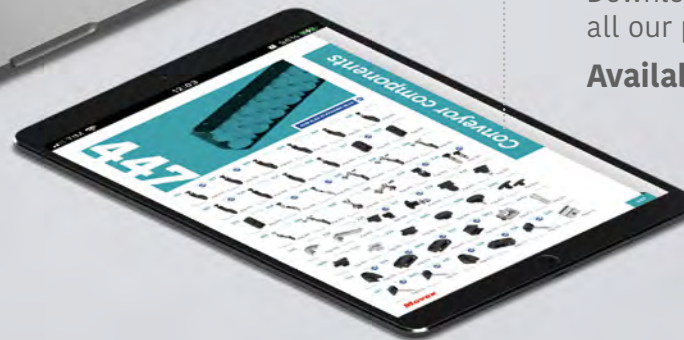
Available on all devices.



Social media

News, facts and info about us and our products.

Follow us   



#MovexWorld

*Contact your sales representative for your hard copy.

Movex[®]

Movex[®]

Movex worldwide

Movex GmbH

P +49-6204-9375-0

Movex Brasil Ltda

P +55-15-3141-2550

Movex France

P +39-335-8085980

Movex AG India

P +91-120-4159660-62

Movex Russia

P +7 (495) 925-88-56

Movex UK Ltd.

P +44-77-20678442

Movex Nederland

P +31-630-994850

Movex USA Inc.

P +1-919-274-5477

Movex SA de CV

P +52-1-331845818

Movex CIS Countries

P +39-348-7769760

Movex S.p.A. a socio unico.

Headquarters

Viale Industria, 22 - 24060

Castelli Calepio (BG) Italy

Logistics center

Via Repubblica, 21/E - 24060

Castelli Calepio (BG) Italy

